



JOE MIHANOVIC
architectural designer

SAMPLED WORKS: 2017-2020

THE PUBLIC CITY



site Moffett Federal Airfield in Mountain View, California - a decommissioned pre-WWII-era naval airship base which is currently owned by NASA and being leased out to Google. Google's executives fly into Moffett on private jets; and Google and its subsidiaries conduct occasional product testing on site.

program mixed-use publicly-funded housing development, public park, shopping centers, & cultural centers (museums, art centers, performance halls, etc.)

concept Amid pretensions of social responsibility, contemporary architecture serves as a mere tool of capital, bending over backward to meet the market demands of the developer and reinforcing social inequalities. The social mission of architecture has been lost.

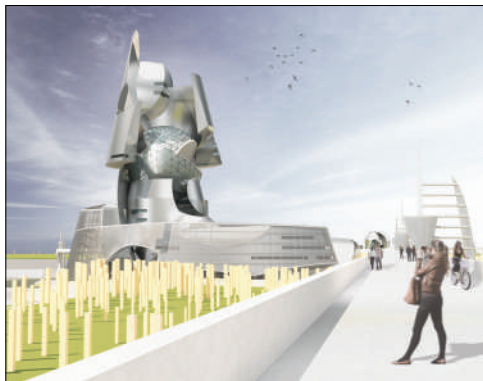
This thesis proposes a new model of urban development, which puts people before profit and provides meaningful and accessible places of culture and recreation. The "Public City" is a publicly-funded housing development and park, with a number of cultural centers (museums, performance halls, fitness facilities, shopping centers) dispersed throughout.



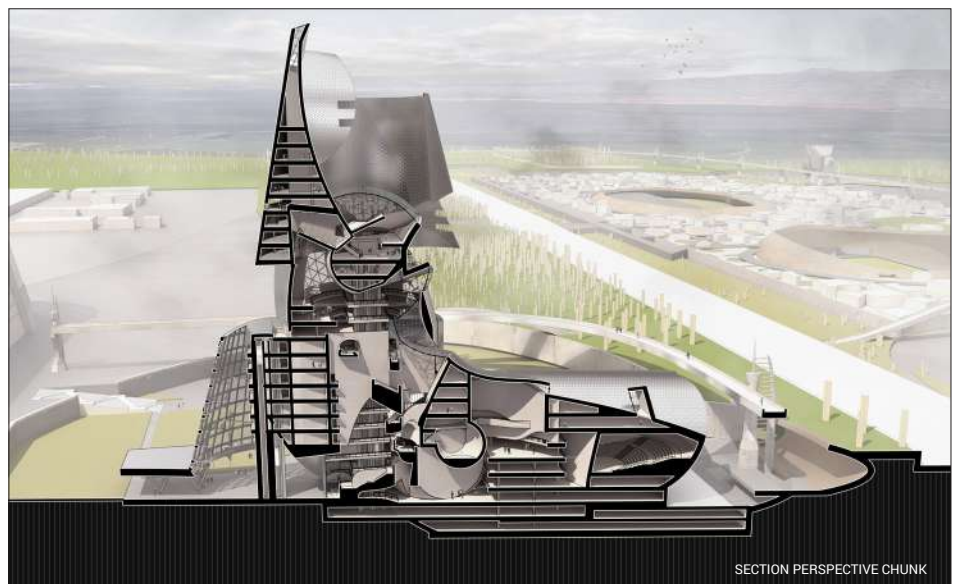
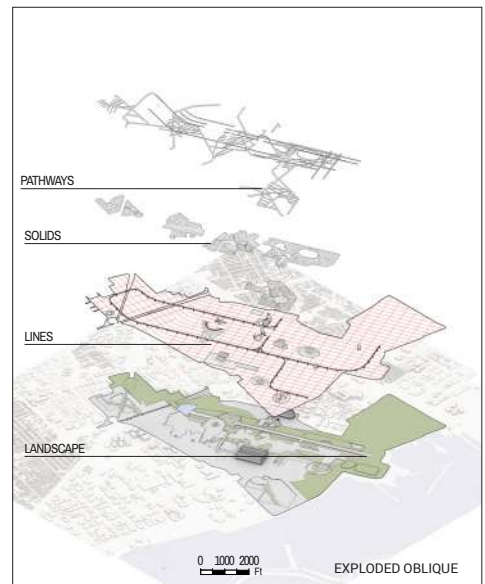
circulation
Hierarchical roadway system criss-crosses the site, partitioning available land area into irregularly-shaped plots.



buffer
Housing units are protected from the noise and activity created by the cultural centers and public parks, by adhering to "buffer zones" which separate them.

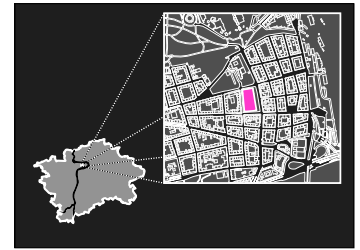
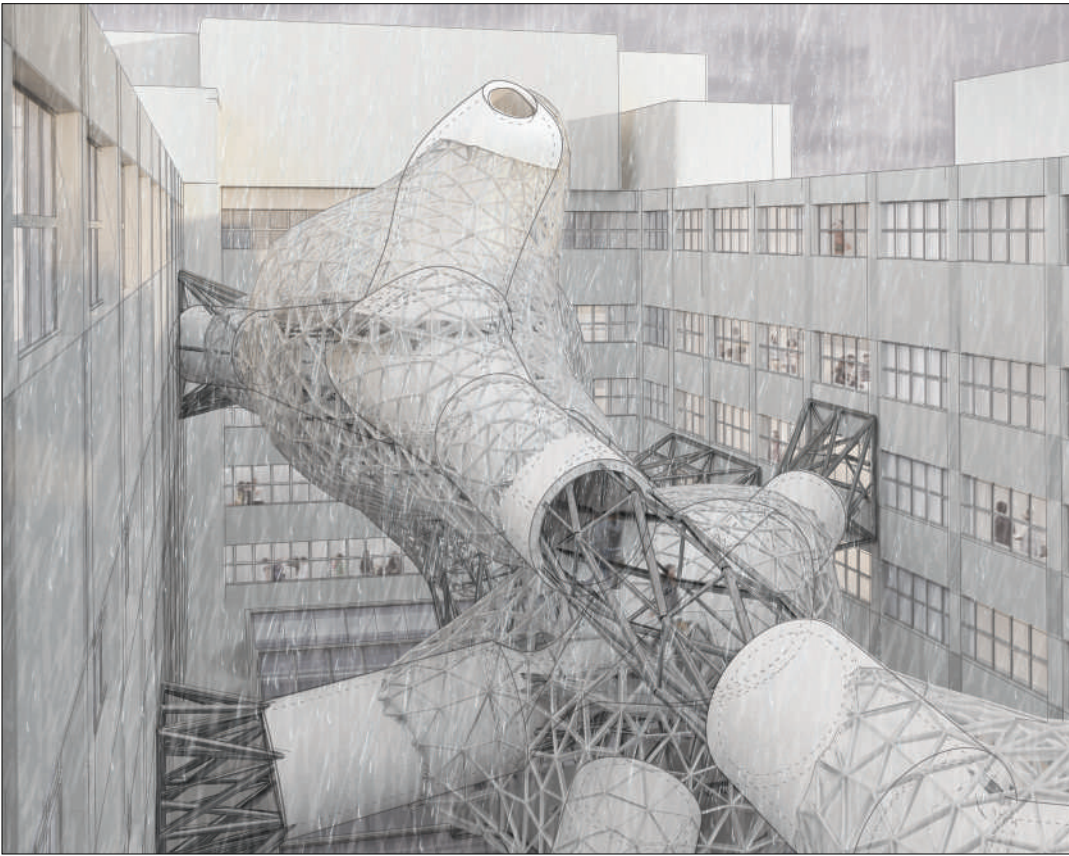


housing
Housing units are randomly arranged and randomly-pace on site, and are concentrated away from the heavier-traffic-areas of the project.



SECTION PERSPECTIVE CHUNK

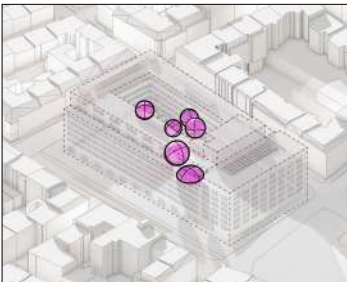
CONJUNCTIVE AMORPHOID



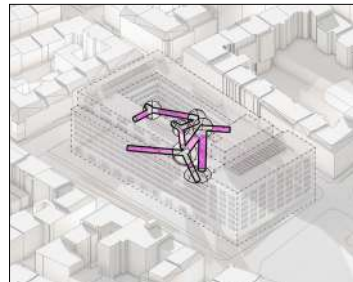
site the courtyard atrium of the existing Fairtrade Palace in Prague, Czech Republic - which serves as a museum and archive for the National Gallery of Prague. Inside are mostly works of art from various historical eras.

program open-ended design brief from the instructor... My proposal includes informal art exhibits, lounges, cafes, a cocktail bar, and a nightclub.

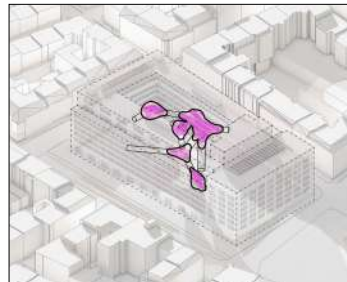
concept bulbous forms hang in the middle of the atrium and provide the exciting social spaces which the existing building sorely lacks. Shafts protrude from these masses and strategically connect spaces diagonally and across the atrium, provoking a dialogue between distinct spaces. A layered approach allows for a variety of experiences within.



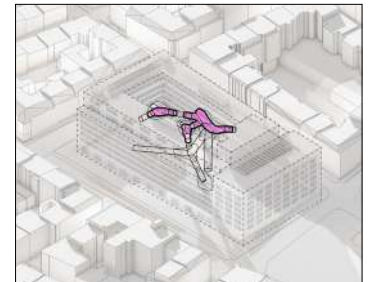
01 bulbs
spherical volumes are placed in the center of the courtyard/atrium; these are the main attractors for the project and provide the interesting social spaces



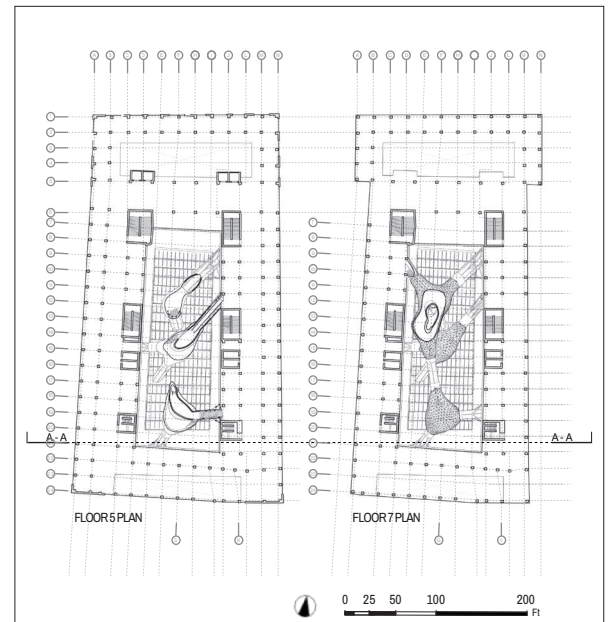
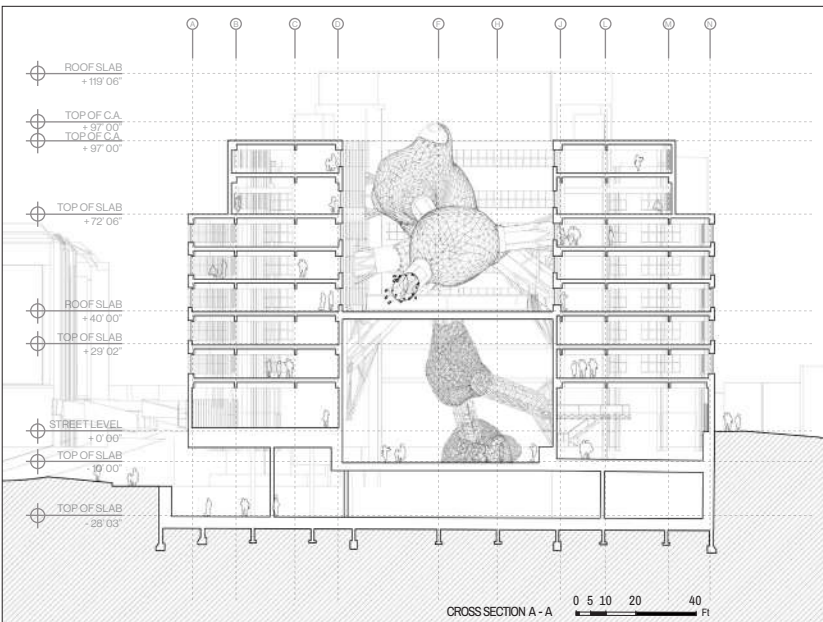
02 circulation shafts
structural circulation shafts protrude from the volumes and connect strategically to points of beam-to-girder-to-column connections in the existing building

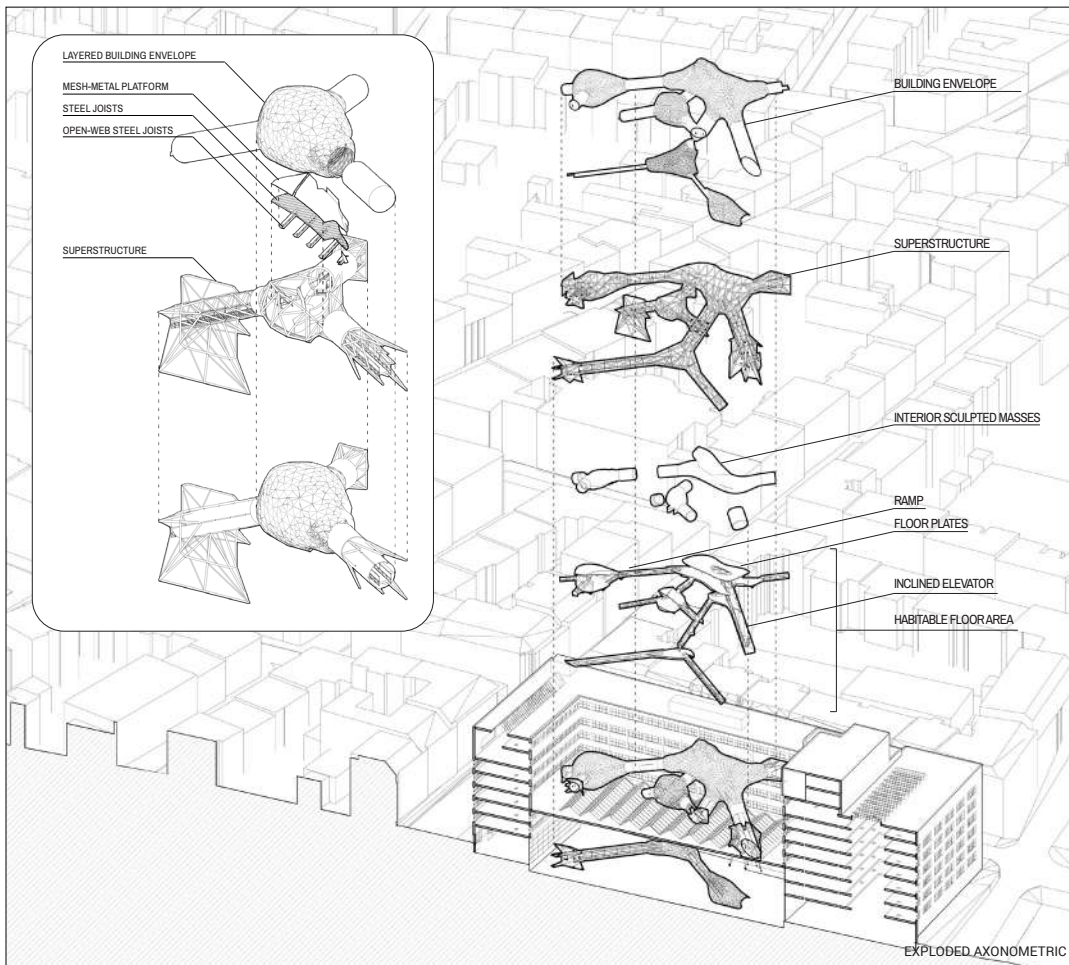


03 morphologies
the spherical volumes are deformed in accordance with the sun path and the direction of circulation shafts to produce gentler curved surfaces

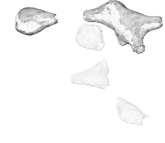


04 sculpting
interior spaces are produced using sculpted masses which provide utility and allow for solid interior walls

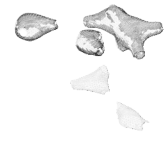




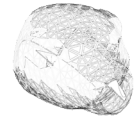
Polycarbonate panels which cover at least 70% of the area of their corresponding windows



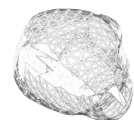
Polycarbonate panels which cover at least 60% of the area of their corresponding windows



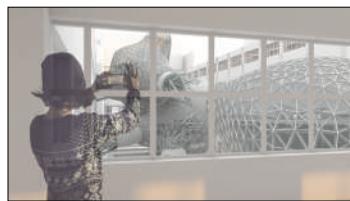
Polycarbonate panels which cover at least 60% of the area of their corresponding windows



Polycarbonate panels which cover at least 50% of the area of their corresponding windows



01 circulation shafts



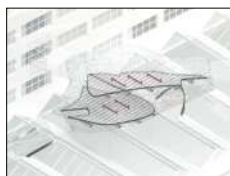
02 view from exhibits



03 cocktail bar



04 silent disco



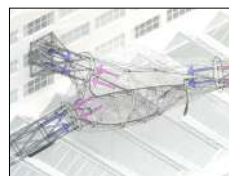
structural load flow analysis



scale: smaller/smaller loads sustained



larger/larger loads sustained



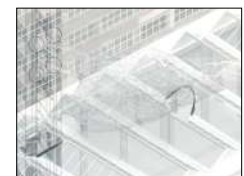
04 superstructure to shafts

the local superstructure is supported by circulation/ structural shafts



05 shafts to existing structure

structural shafts connect to adjacent beams and girders at their elevation



06 reinforcements

the existing two-way steel system must be augmented with additional column supports and diagonal cross-bracing

01 platform to joists

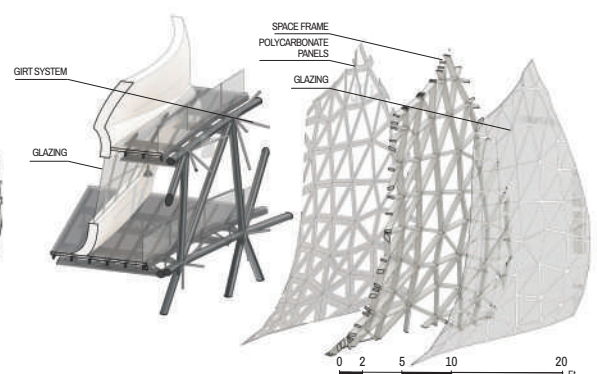
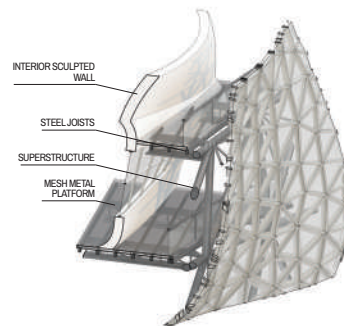
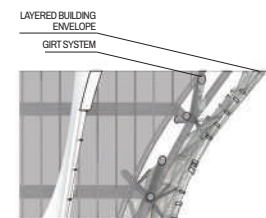
habitable spaces are supported by translucent metal mesh platforms (see below) on top of joists

02 joists to open-web steel joists

steel joists connect to open-web steel joists around the perimeter of the bulb/blobs

03 open-web steel joists to superstructure

OWSJ connect to the local superstructure



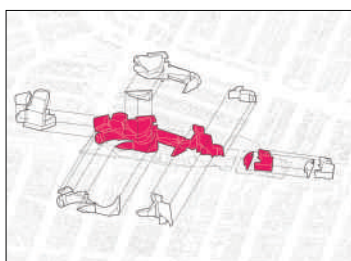
CONICAL CONGLOMERATE



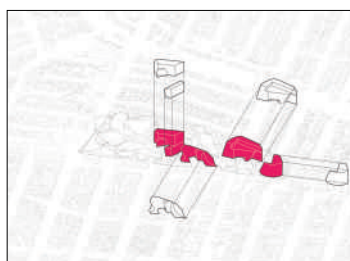
site Westside Pavilion shopping mall & adjacent movie theater complex in West Los Angeles (above)

program multi-use housing and media office project - to replace the in-progress Gensler renovation for Google

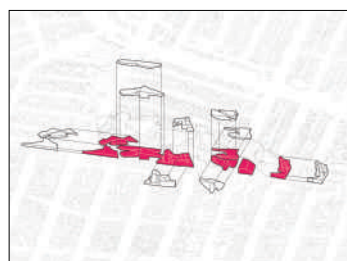
concept the project explores linearity versus gesture through the manipulation of conical forms and rectilinear subtractive elements. The resulting forms aim to provide a diversity of experience and unexpected spatial arrangements. Program is dispersed longitudinally across the site, encouraging interaction between different users.



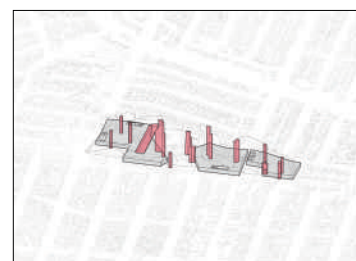
01 housing
housing includes micro-units, a hotel, low-income to high-income units, transitional housing, and a homeless shelter



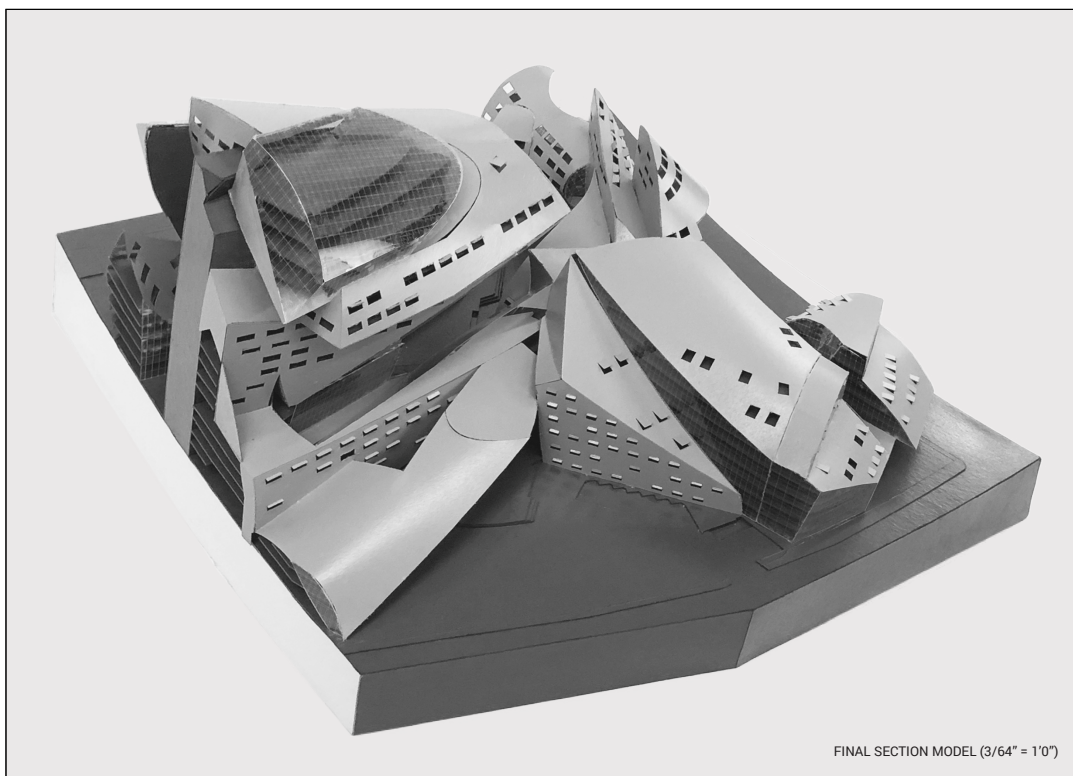
02 office space
office types include open-plan offices and WeWork type co-working offices



03 retail
retail includes restaurants, cafes, tech shops, phone service, and tech repair



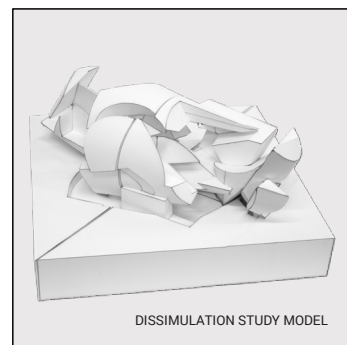
04 circulation & parking
parking is below ground, and circulation shafts are hidden in the envelope so as not to appear on the exterior



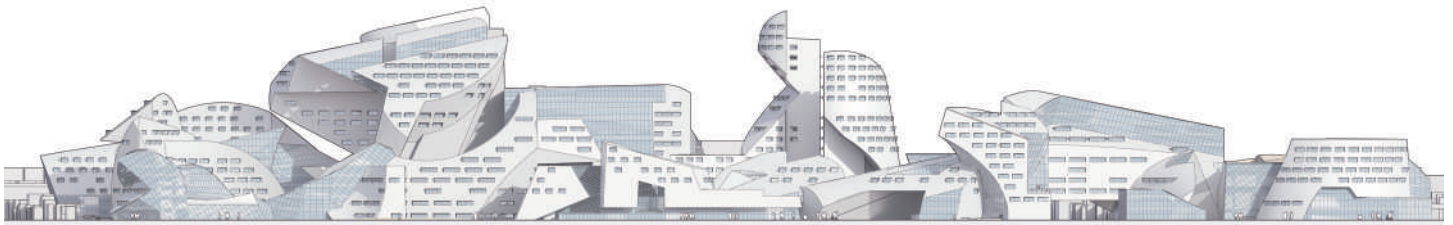
FINAL SECTION MODEL (3/64" = 1'0")



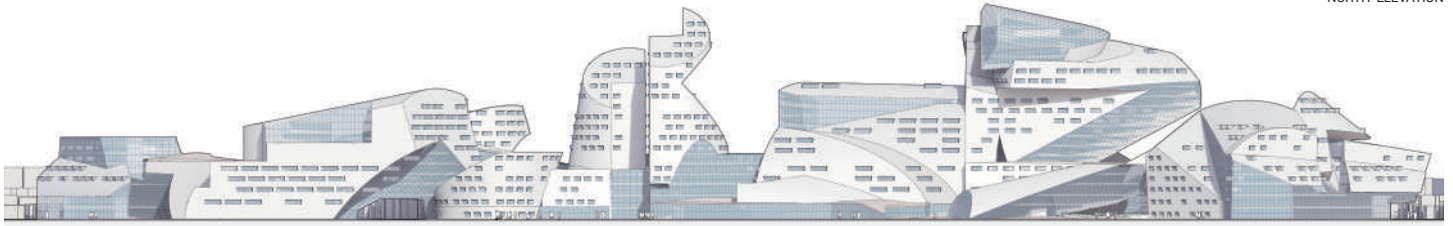
FINAL SECTION MODEL (3/64" = 1'0")



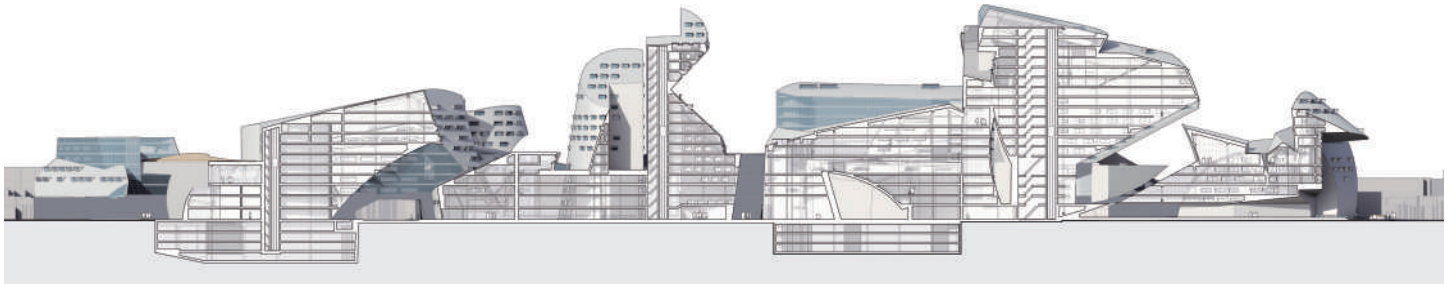
DISSIMULATION STUDY MODEL



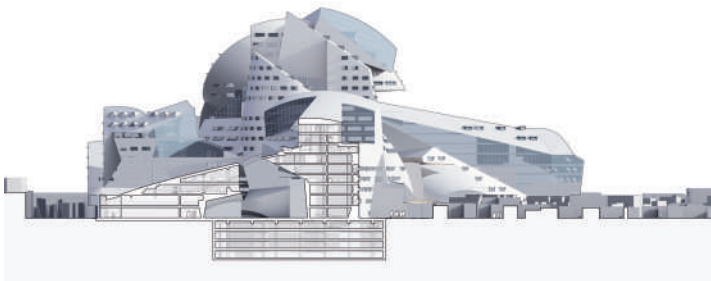
NORTH ELEVATION



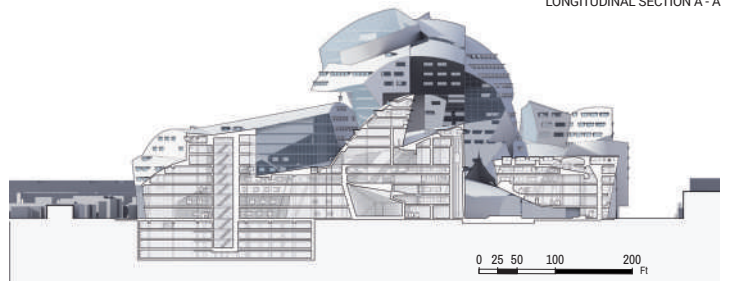
SOUTH ELEVATION



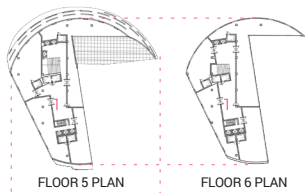
LONGITUDINAL SECTION A - A



CROSS SECTION B - B

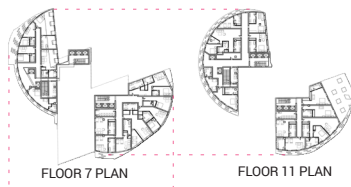


CROSS SECTION C - C



FLOOR 5 PLAN

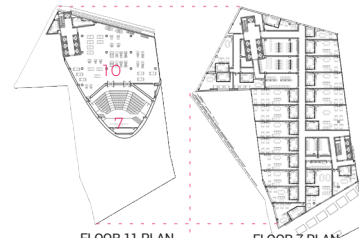
FLOOR 6 PLAN



FLOOR 7 PLAN

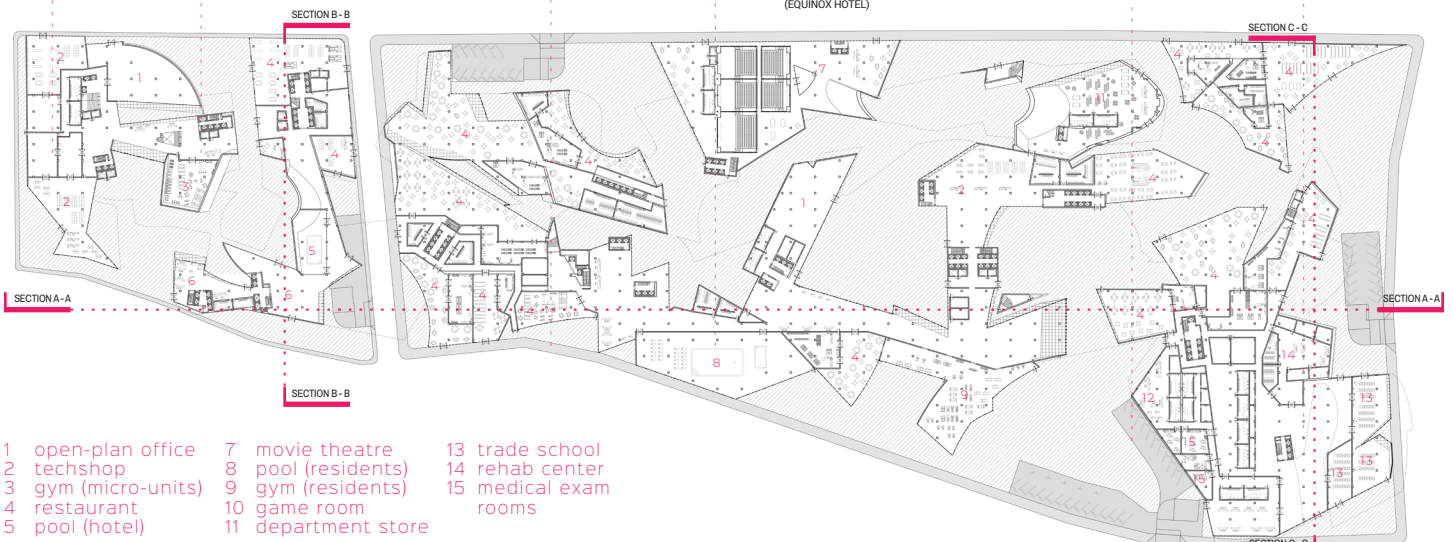
FLOOR 11 PLAN

(EQUINOX HOTEL)



FLOOR 11 PLAN

FLOOR 7 PLAN

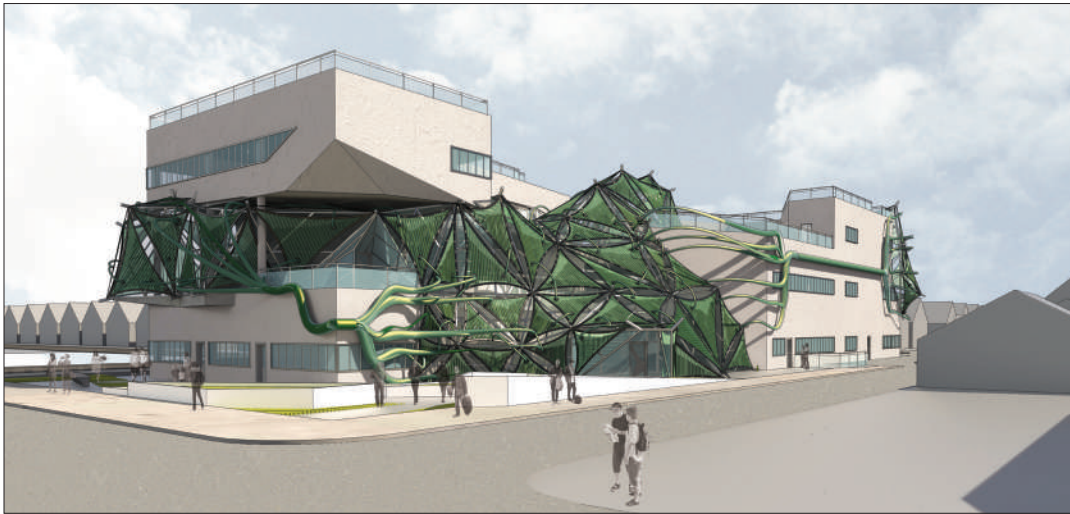


- 1 open-plan office
- 2 techshop
- 3 gym (micro-units)
- 4 restaurant
- 5 pool (hotel)
- 7 movie theatre
- 8 pool (residents)
- 9 gym (residents)
- 10 game room
- 11 department store
- 13 trade school
- 14 rehab center
- 15 medical exam rooms

0 25 50 100 200 FT GROUND FLOOR PLAN

ALGAE FARM*

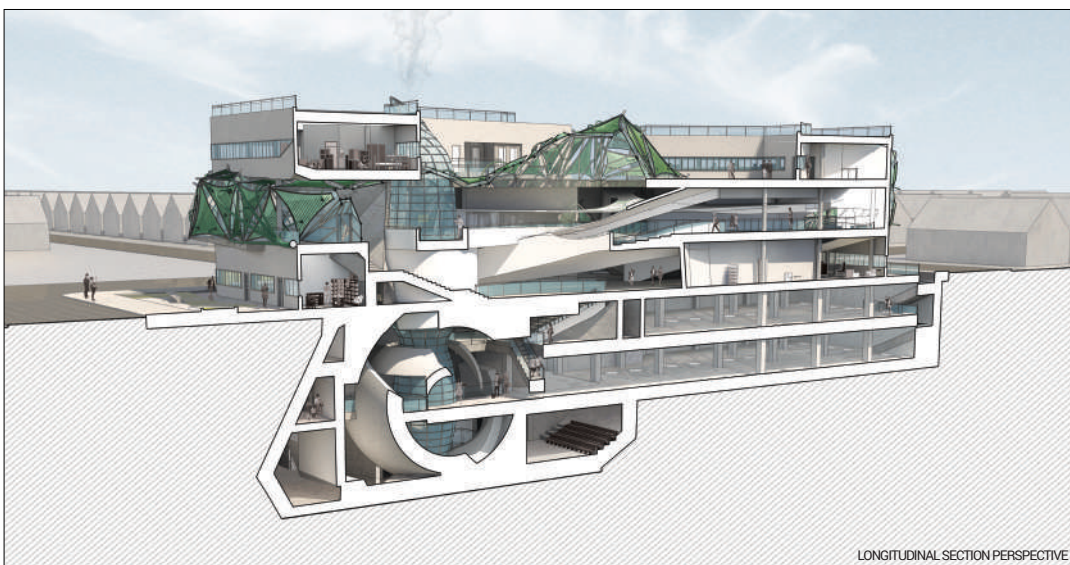
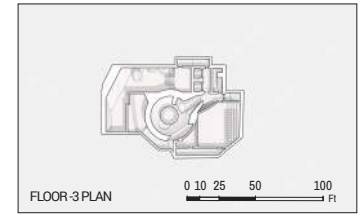
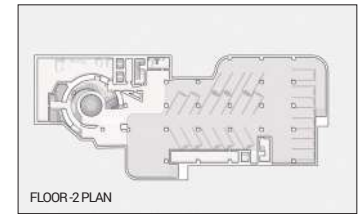
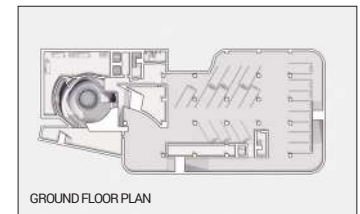
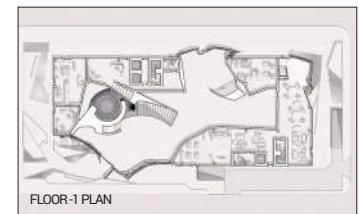
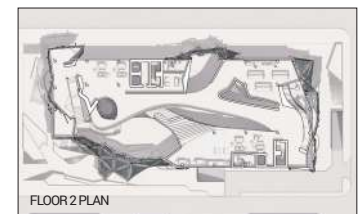
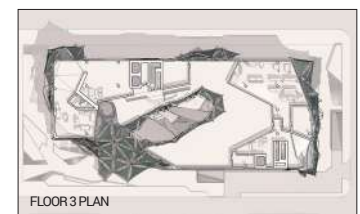
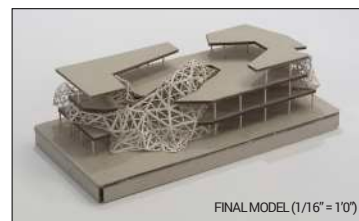
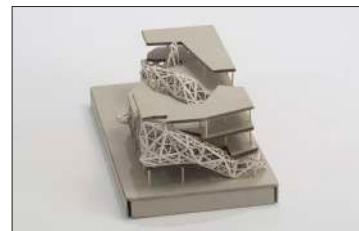
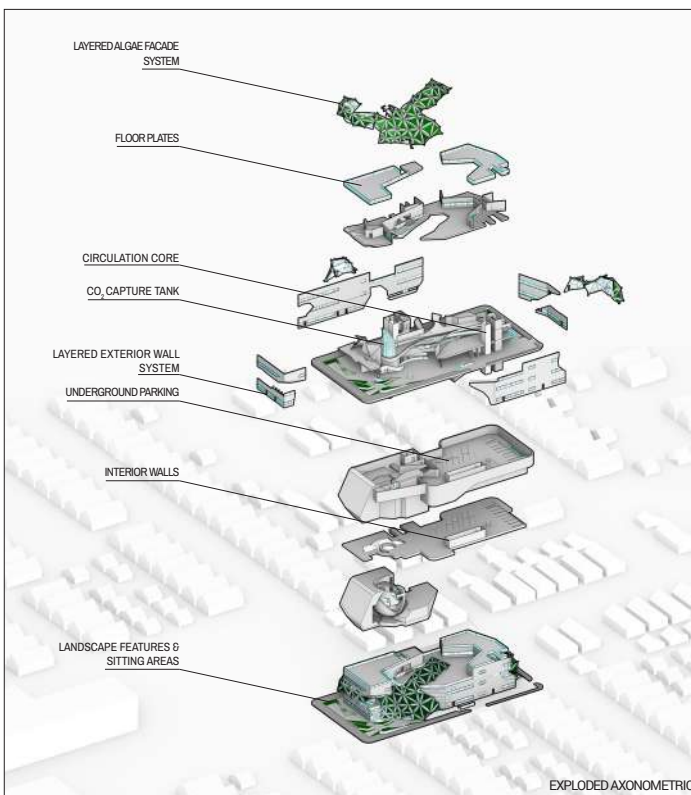
(*please note: This project was completed in collaboration with Georgina Bowman. All drawings and models shown are entirely mine.)



site abandoned parking lot in a predominantly suburban neighborhood in the Hamtramck township within Detroit, near other retail stores and restaurants.

program an urban farm and marketplace atrium/community center

concept a triangulating "virus" infects a factory and ruptures its facade on each face. Algae is harvested in ETFE bags in the skin of the facade and converted to biomass for cleaner burning fuels, as well as cooking oils and other experimental products.



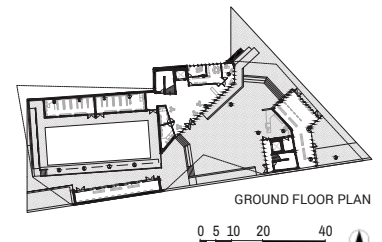
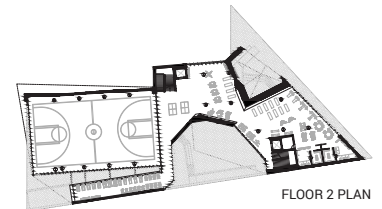
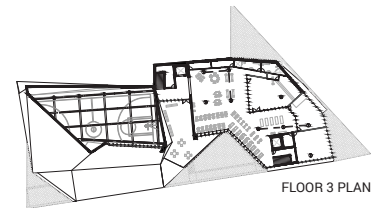
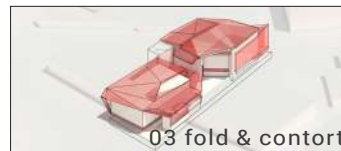
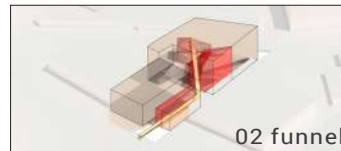
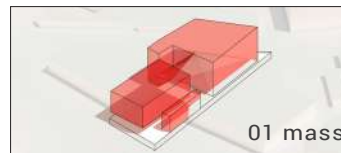
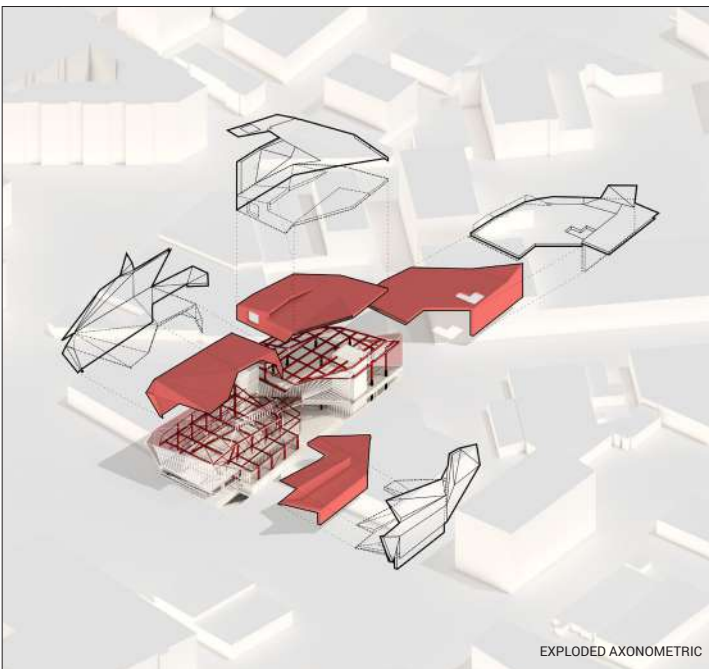
ARTS DISTRICT MULTIPLEX



site an abandoned lot in the heart of the Arts District in downtown Los Angeles.

program gym and art museum hybrid consisting of fitness spaces, a basketball gym, a full-length 50m pool, art galleries, and retail (including a juice bar and a deli).

concept a folding roof membrane serves as the main architectural feature. The approximate footprints of each program are placed on site, and a continuous skin system is applied which bends, folds, and tears to: 1) suggest pedestrian paths of travel, 2) encourage activity by providing corners, niches, and protection, and 3) allow sunlight to permeate spaces with deep floor plates.



SECTION PERSPECTIVE

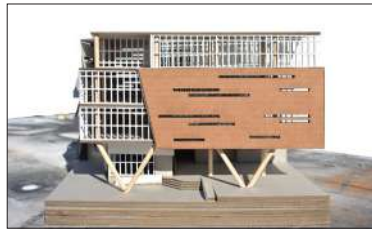
SOUTH OF MARKET RESOURCE CENTER



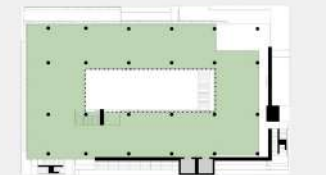
site south-of-market area of San Francisco - near Mission Street and many attractions of downtown. The surrounding neighborhood is demographically diverse and culturally rich, with a variety of different retail stores and restaurants. Local residents are mostly college students and young (sub 30) professionals.

program mixed-use building including a 21st century resource center/library, restaurants, and retail spaces on the ground floor, and housing for students and young professionals living in the city.

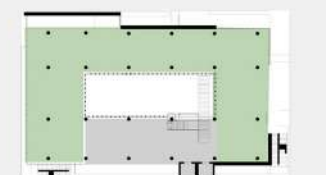
concept the resource center program is differentiated from other programs through materiality. A terracotta rainscreen is applied to the spaces which constitute the resource center - this clay-based texture intends to respect the predominantly brick context in the surrounding neighborhood while giving it a "new" feel.



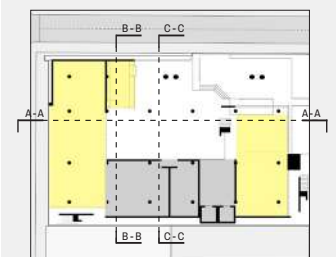
FLOORS 5-7 PLAN



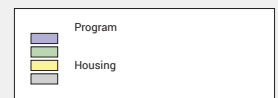
FLOOR 4 PLAN



FLOORS 2-3 PLAN



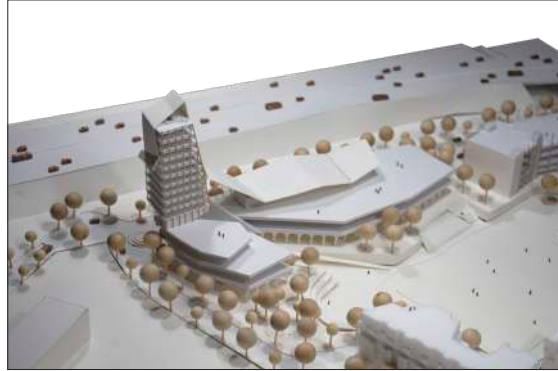
GROUND FLOOR PLAN



CROSS SECTION C-C PERSPECTIVE

TIGHE ARCHITECTURE - INTERNSHIP

MODELO



BARRANCA



WESTKNOLL



LINCOLN



YALE



BROADWAY

